

1



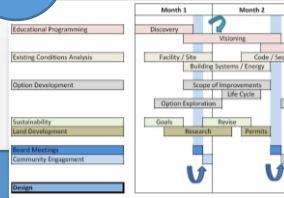
Define Goals

2



Collect Facts

3



Analyze Data

4



Develop Options

5



Recommendations

Mission Statement

The mission of the Albert Gallatin Area School District is to partner with families and the community to inspire and support each student in reaching his/her optimal best by creating a safe and respectful environment that fosters academic success, social development, and lifelong learning.

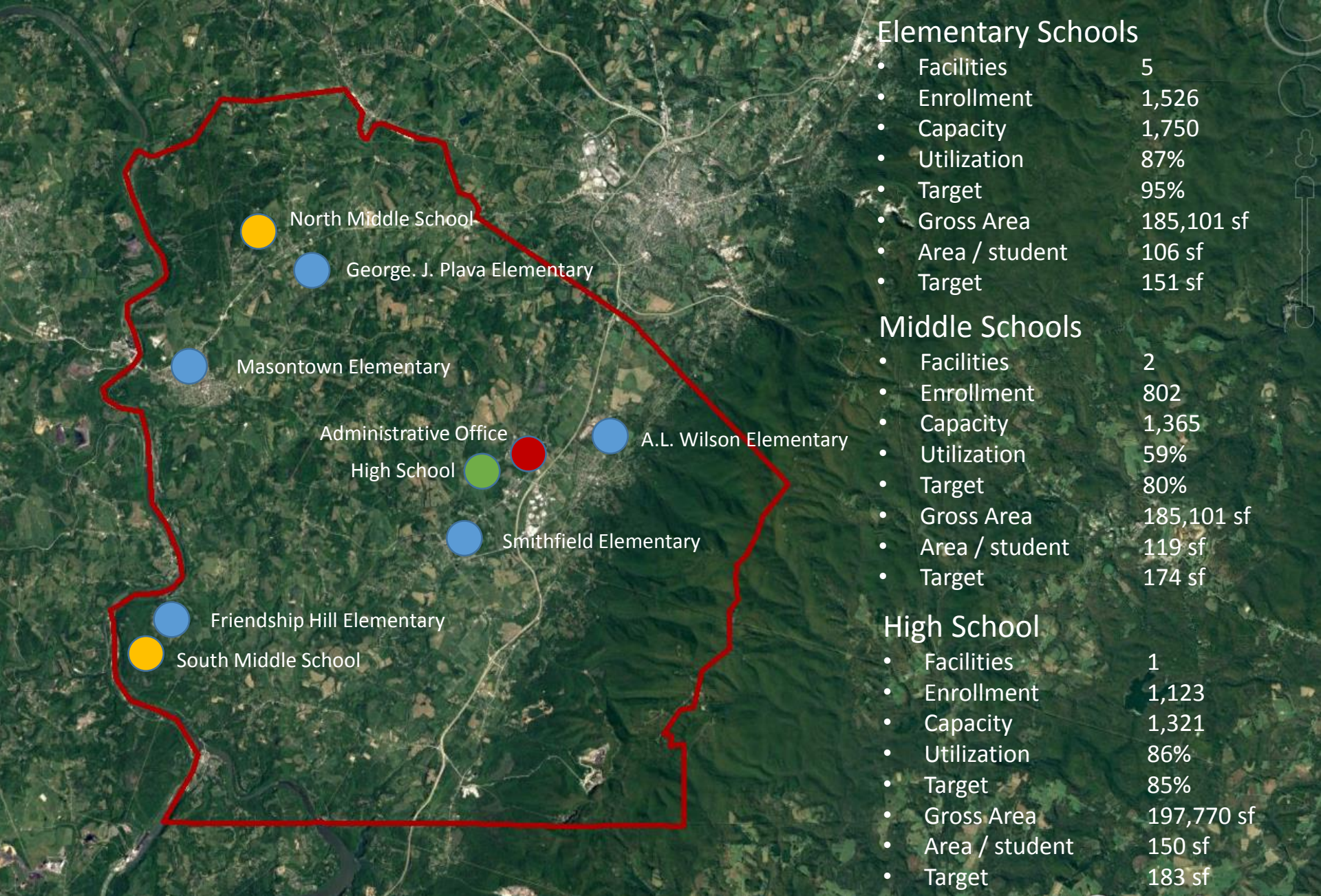
Vision Statement

The Albert Gallatin Area School District is a place of excellence where students feel safe and reach their optimal potential in academic, creative, personal, physical, moral, and spiritual areas of development.



School Name	11/12 SY Enrollment	12/13 SY Enrollment	13/14 SY Enrollment	14/15 SY Enrollment	15/16 SY Enrollment	16/17 SY Enrollment
Albert Gallatin Sr. High	1138	1145	1139	1107	1107	1132
Albert Gallatin North Middle	466	438	409	418	412	413
Albert Gallatin South Middle	401	415	419	402	375	389
AL Wilson Elem	265	249	252	232	223	405
D Ferd Swaney Elem	241	244	256	236	234	Closed
Friendship Hill Elem	238	223	206	215	235	216
Masontown Elem	240	260	247	246	236	237
George J. Plava Elem	318	286	303	313	316	347
Smithfield Elem	321	311	286	297	289	321
District Total per year:	3628	3571	3517	3466	3427	3460





Elementary Schools

- Facilities 5
- Enrollment 1,526
- Capacity 1,750
- Utilization 87%
- Target 95%
- Gross Area 185,101 sf
- Area / student 106 sf
- Target 151 sf

Middle Schools

- Facilities 2
- Enrollment 802
- Capacity 1,365
- Utilization 59%
- Target 80%
- Gross Area 185,101 sf
- Area / student 119 sf
- Target 174 sf

High School

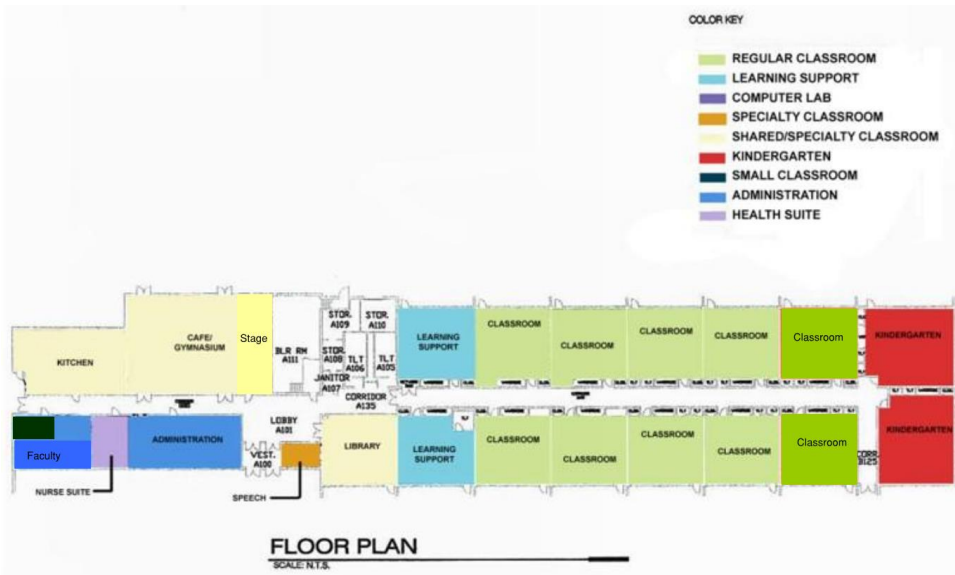
- Facilities 1
- Enrollment 1,123
- Capacity 1,321
- Utilization 86%
- Target 85%
- Gross Area 197,770 sf
- Area / student 150 sf
- Target 183 sf





Crabtree, Rohrbaugh & Associates
Architects

Collect Facts Friendship Hill Elementary School



Capacity Calculation			
Friendship Hill			
	Classrooms	Capacity	Total
K Classrooms	2	25	50
1-5 classrooms	10	25	250
Special education / LS	2	0	
Total			300
Current Enrollment			216
Gross Area SF			30,550





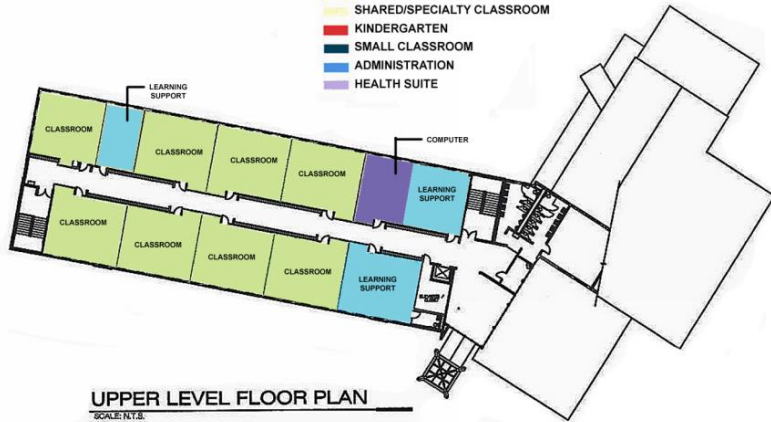
Crabtree, Rohrbaugh & Associates
Architects

Collect Facts

Masontown Elementary School



- COLOR KEY**
- REGULAR CLASSROOM
 - LEARNING SUPPORT
 - COMPUTER LAB
 - SPECIALTY CLASSROOM
 - SHARED/SPECIALTY CLASSROOM
 - KINDERGARTEN
 - SMALL CLASSROOM
 - ADMINISTRATION
 - HEALTH SUITE



Capacity Calculation			
Masontown			
	Classrooms	Capacity	Total
K Classrooms	2	25	50
1-5 Classrooms	10	25	250
Special Education / LS	6		0
Pre K - Non District	1		

Total			300
Current Enrollment			237
Gross Area SF			40,875



**Crabtree, Rohrbaugh & Associates
Architects**

Collect Facts
Masontown Elementary School

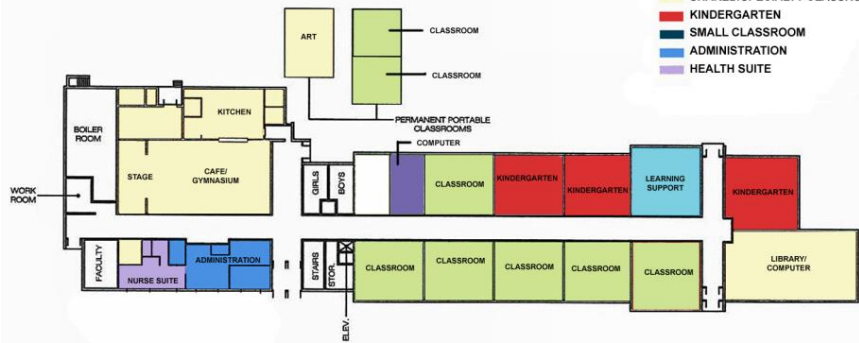


Crabtree, Rohrbaugh & Associates
Architects

Collect Facts
George J. Plava Elementary



- REGULAR CLASSROOM
- LEARNING SUPPORT
- COMPUTER LAB
- SPECIALTY CLASSROOM
- SHARED/SPECIALTY CLASSROOM
- KINDERGARTEN
- SMALL CLASSROOM
- ADMINISTRATION
- HEALTH SUITE



Capacity Calculations			
Plava			
	Classrooms	Capacity	Total
K Classrooms	3	25	75
1-5 classrooms	13	25	325
Special Education / LS	2		0
Total			400
Current Enrollment			347
Gross Area SF			41,800



Crabtree, Rohrbaugh & Associates
Architects

Collect Facts
Smithfield Elementary School



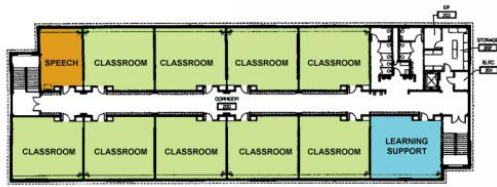
Capacity Claculation			
Smithfield			
	Classrooms	Capacity	Total
K Classrooms	3	25	75
1-5 classrooms	10	25	250
Special Education / LS	1		0
Total			325
Current Enrollment			321
Gross Area SF			31,536



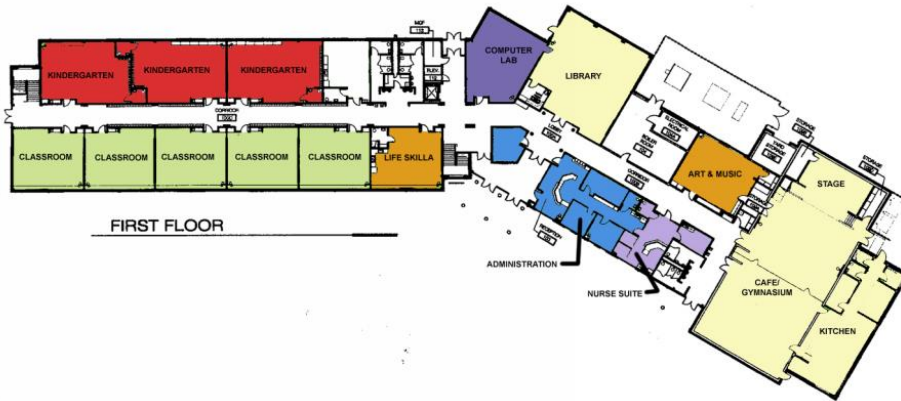


Crabtree, Rohrbaugh & Associates
Architects

Collect Facts
A. L. Wilson Elementary School



SECOND FLOOR



FIRST FLOOR



Capacity Calculation			
Wilson			
	Classrooms	Capacity	Total
K Classrooms	3	25	75
1-5 classrooms	14	25	350
Special Education / LS	2		0
Total			425
Current Enrollment			405
Gross Area SF			40,340



Crabtree, Rohrbaugh & Associates
Architects

Collect Facts
South Middle School

COLOR KEY

- REGULAR CLASSROOM
- LEARNING SUPPORT
- COMPUTER LAB
- SPECIALTY CLASSROOM
- SHARED/SPECIALTY CLASSROOM
- SCIENCE LAB
- SMALL CLASSROOM
- ADMINISTRATION
- HEALTH SUITE

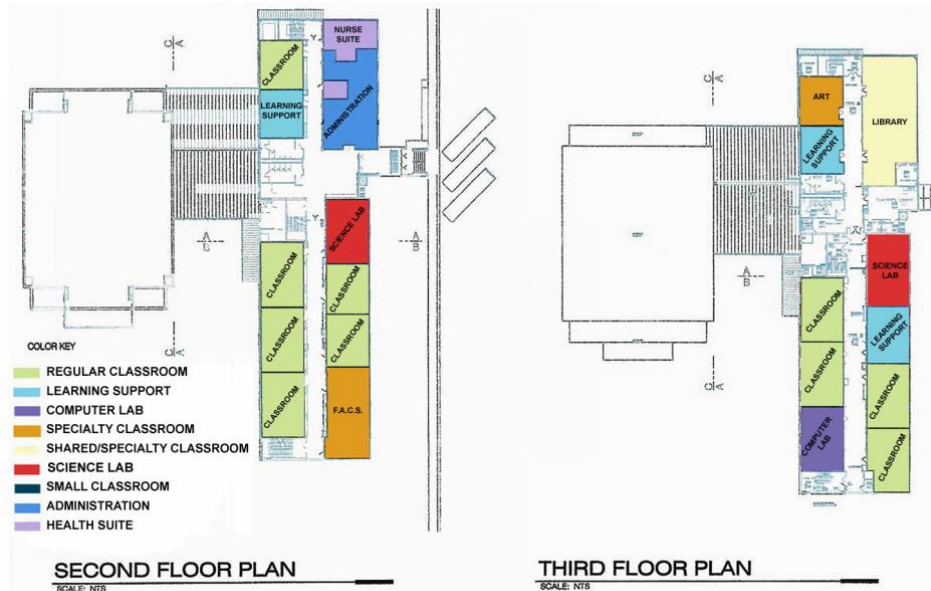
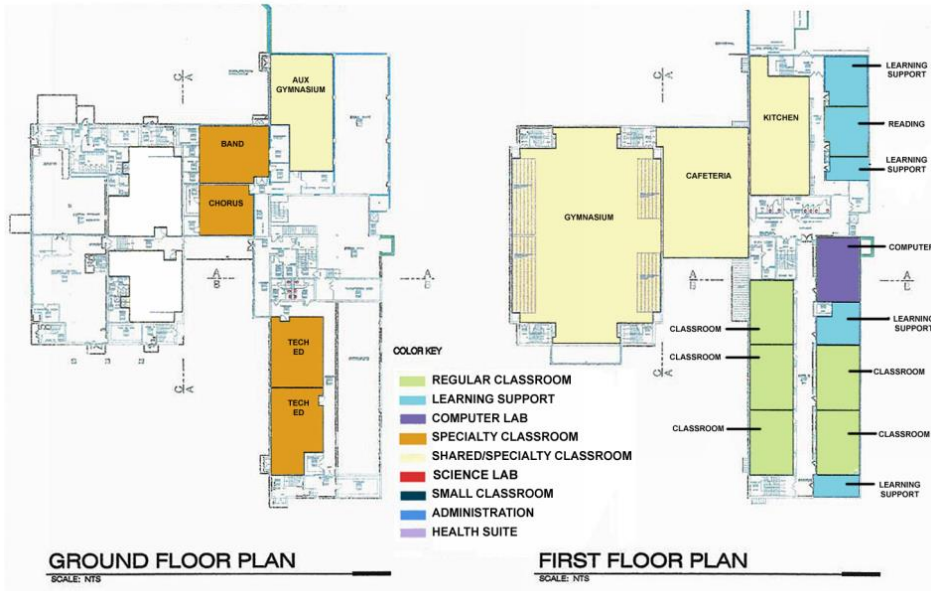


Capacity Calculations		PDE	
South Middle	Classrooms	Capacity	Total
Classrooms	17	25	425
Science CR		25	0
Science Labs	2	20	40
Business Lab		20	0
Computer Lab	1	20	20
TV Lab		20	0
Art	1	20	20
Band	1	25	25
Piano Lab			0
Orchestra		25	0
Choral	1	25	25
FCS	1	20	20
Tech Ed	3	20	60
Gym	1	66	66
Aux Gym		33	0
Fitness			0
Special Ed / LS	2		0
Total	30		701
Current Enrollment			389
Gross Area SF			73,525



Crabtree, Rohrbaugh & Associates
Architects

Collect Facts
North Middle School



Capacity Calculations

North Middle			
	Classrooms	Capacity	Total
Classrooms	15	25	375
Science CR		25	0
Science Labs	2	20	40
Business Lab		20	0
Computer Lab	1	20	20
TV Lab		20	0
Art	1	20	20
Band	1	25	25
Piano Lab			0
Orchestra		25	0
Choral	1	25	25
FCS	1	20	20
Tech Ed	2	20	40
Gym	1	66	66
Aux Gym	1	33	33
Fitness			0
Special Ed / LS	5		0

Total	31	664
Current Enrollment		413
Gross Area SF		88,940

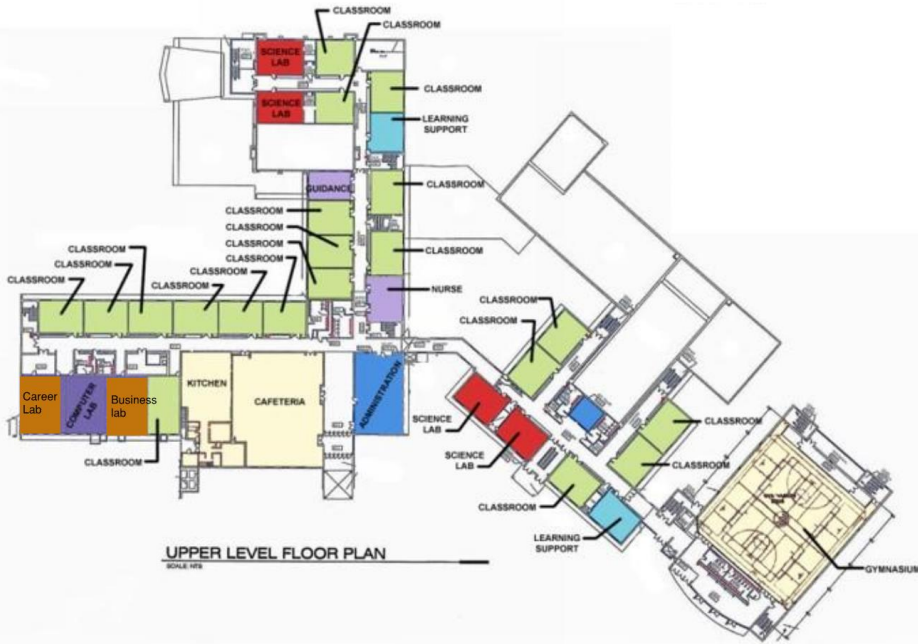
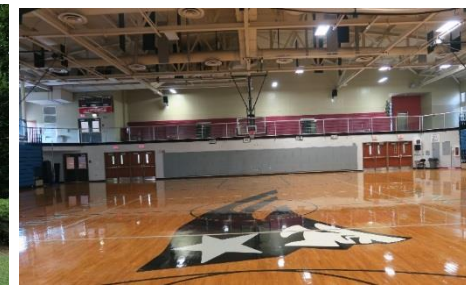
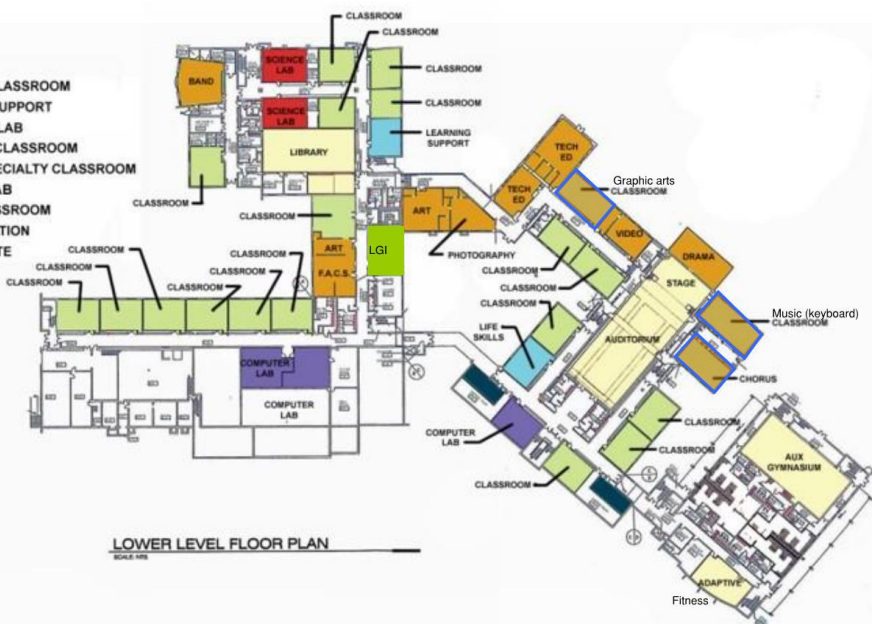


Crabtree, Rohrbaugh & Associates
Architects

Collect Facts
High School

COLOR KEY

- REGULAR CLASSROOM
- LEARNING SUPPORT
- COMPUTER LAB
- SPECIALTY CLASSROOM
- SHARED/SPECIALTY CLASSROOM
- SCIENCE LAB
- SMALL CLASSROOM
- ADMINISTRATION
- HEALTH SUITE



Capacity Calculations			
High School			
	Classrooms	Capacity	Total
Classrooms	33	25	825
Science CR		25	0
Science Labs	6	20	120
Business Lab	1	20	20
Computer Lab	5	20	100
TV Lab	1	20	20
Art	3	20	60
Band	1	25	25
Piano Lab	1		0
Orchestra		25	0
Choral	1	25	25
FCS	1	20	20
Tech Ed	2	20	40
Driver's ed		20	0
Gym	1	66	66
Natorium		31	0
Aux Gym		33	0
Fitness	1		0
Wrestling	1		0
Special Ed / LS	3		0
LGI			0
Total	61		1321
Current Enrollment			1132
Gross Area SF			197,770



Crabtree, Rohrbaugh & Associates
Architects

Collect Facts
D. Ferd Swaney Elementary School

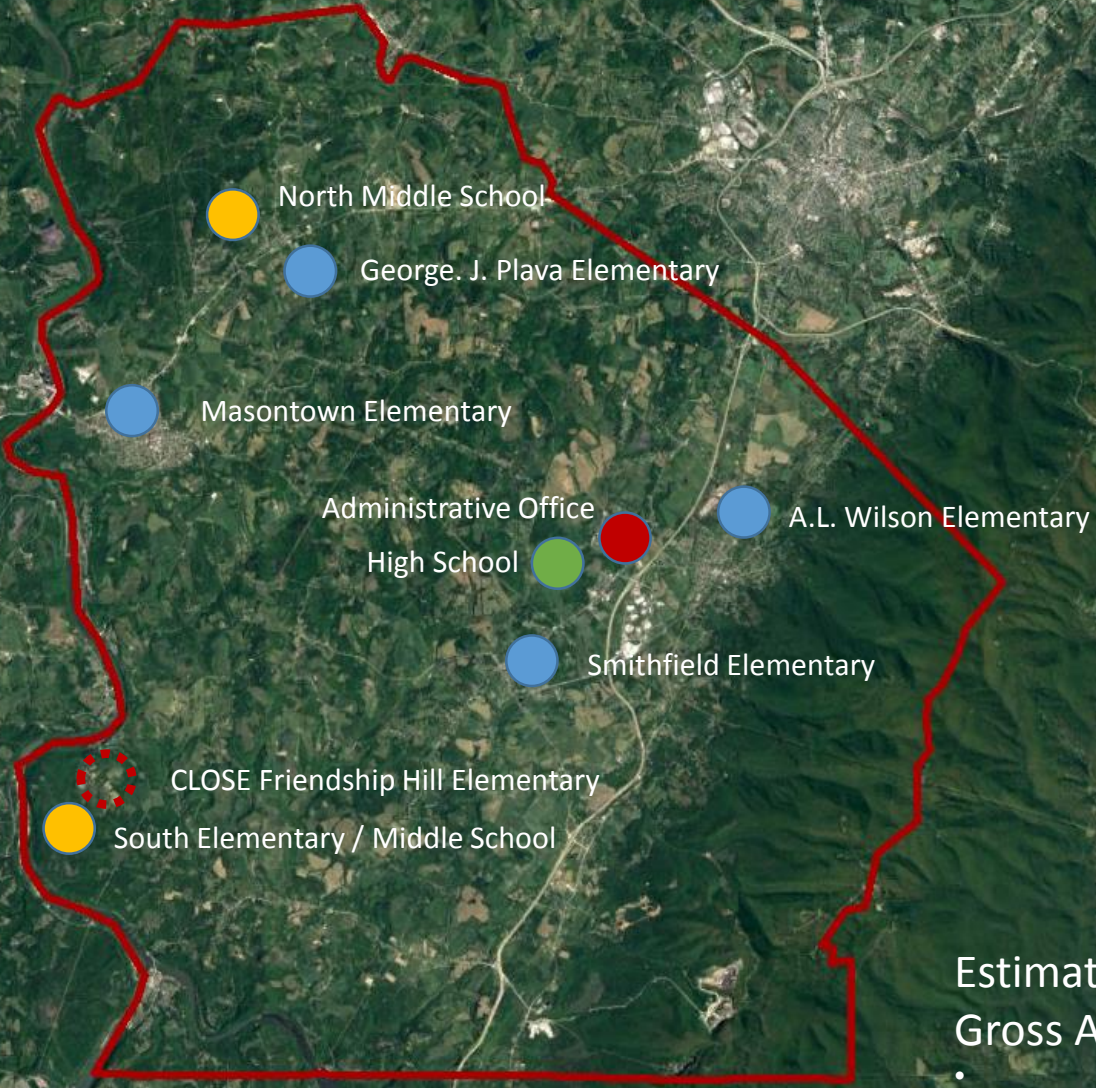






		ELEMENTARY SCHOOLS K-5					MIDDLE SCHOOLS 6-8			HS 9-12		
FACTS		Friendship Hill	Mason town	Plava	Smithfiel d	Wilson	Subtotal Elem	North	South	Subtotal Middle	High School	District Totals (Academic)
	Year Constructed	1966	1928	1963	1966	2008		1915	1958		1917	
	Renovations / Additions	95,04	59,99	90,13	95,04			61,03	2001		38,66,03,04	
	Acreage	12	2	35	10	10	69	15	22	37	22	128
	Gross Area (SF)	30,550	40,875	41,800	31,536	40,340	185,101	88,940	73,525	162,465	197,770	545,336
	Design capacity	300	300	400	325	425	1750	664	701	1,365	1,321	4,436
	Functional capacity (target utilization 95% Elem, 80% MS, 85% HS)	285	285	380	309	404	1,663	531	561	1,092	1,123	3,877
	Current enrollment	216	237	347	321	405	1526	413	389	802	1,132	3,460
	Vo tech and life skills students*										109	109
	seat surplus / deficit current	84	63	53	4	20	224	251	312	563	298	1085
Utilization	Current utilization based on design capacity	72%	79%	87%	99%	95%	87%	62%	55%	59%	86%	78%
	Benchmark	95%	95%	95%	95%	95%	95%	80%	80%	80%	85%	
	variance from benchmark	-23%	-16%	-8%	4%	0%	-8%	-18%	-25%	-21%	1%	
Area per student	Area / student based on design capacity.	102	136	105	97	95	106	134	105	119	150	123
	Benchmark	151	151	151	151	151	151	174	174	174	183	
	variance from benchmark	49	15	47	54	56	45	40	69	55	33	
* Fayette CTI 132 AM, 94 PM, All Day Building Maintenance 13 and Life Skills 2. Total .5 day 226, full day 15												
Use worst case scenario: 94 + 13 + + 2 = 109												

Option 1 - Close Friendship, convert South to K-8



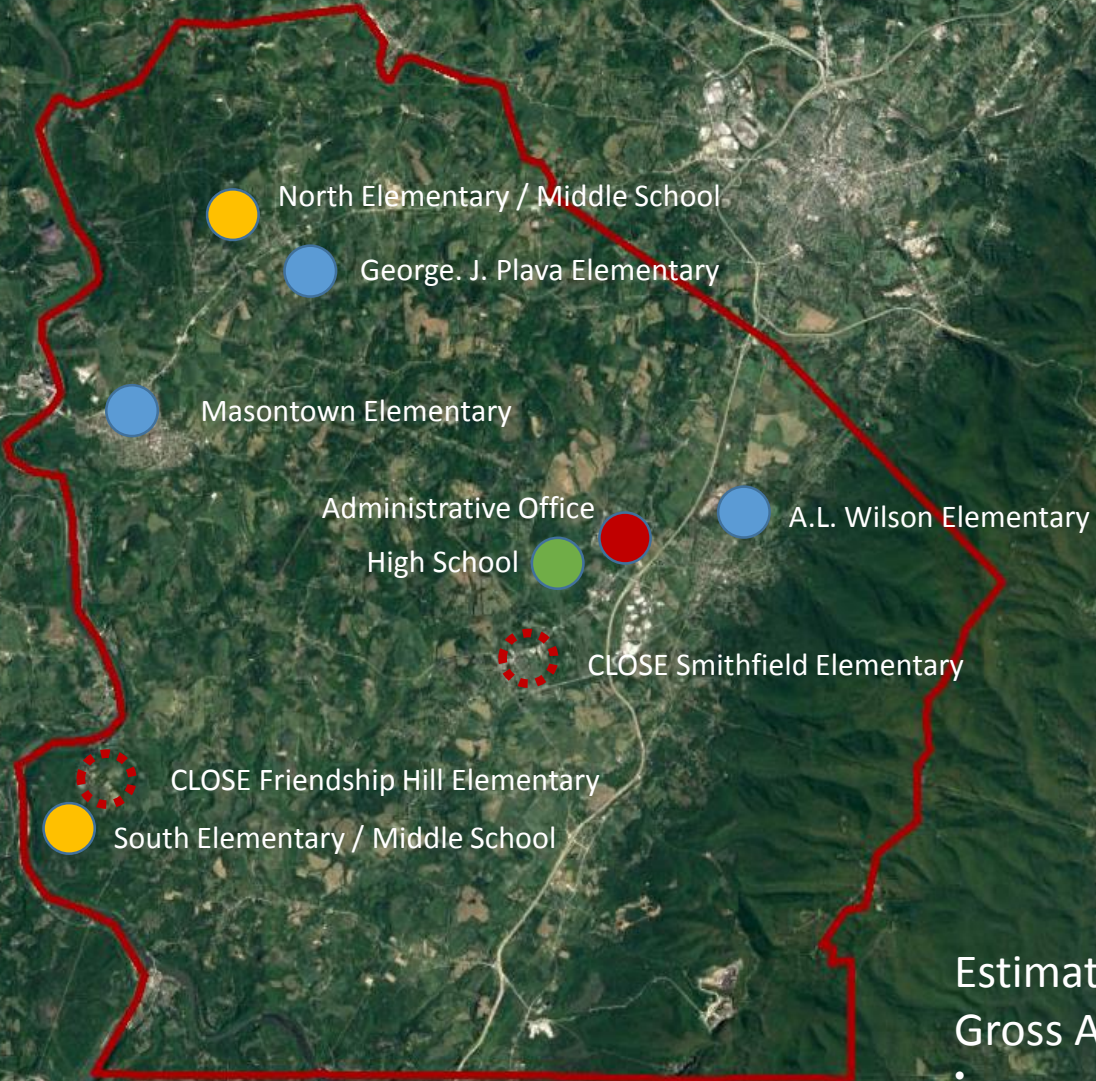
Student Disposition:

Friendship Students go to South

6th graders coming from Masontown go to North instead of South

Estimated Cost:	\$0
Gross Area Reduction	30,550 sf

Option 2 - Close Friendship and Smithfield or Masontown, Convert North & South to K-8



Student Disposition:

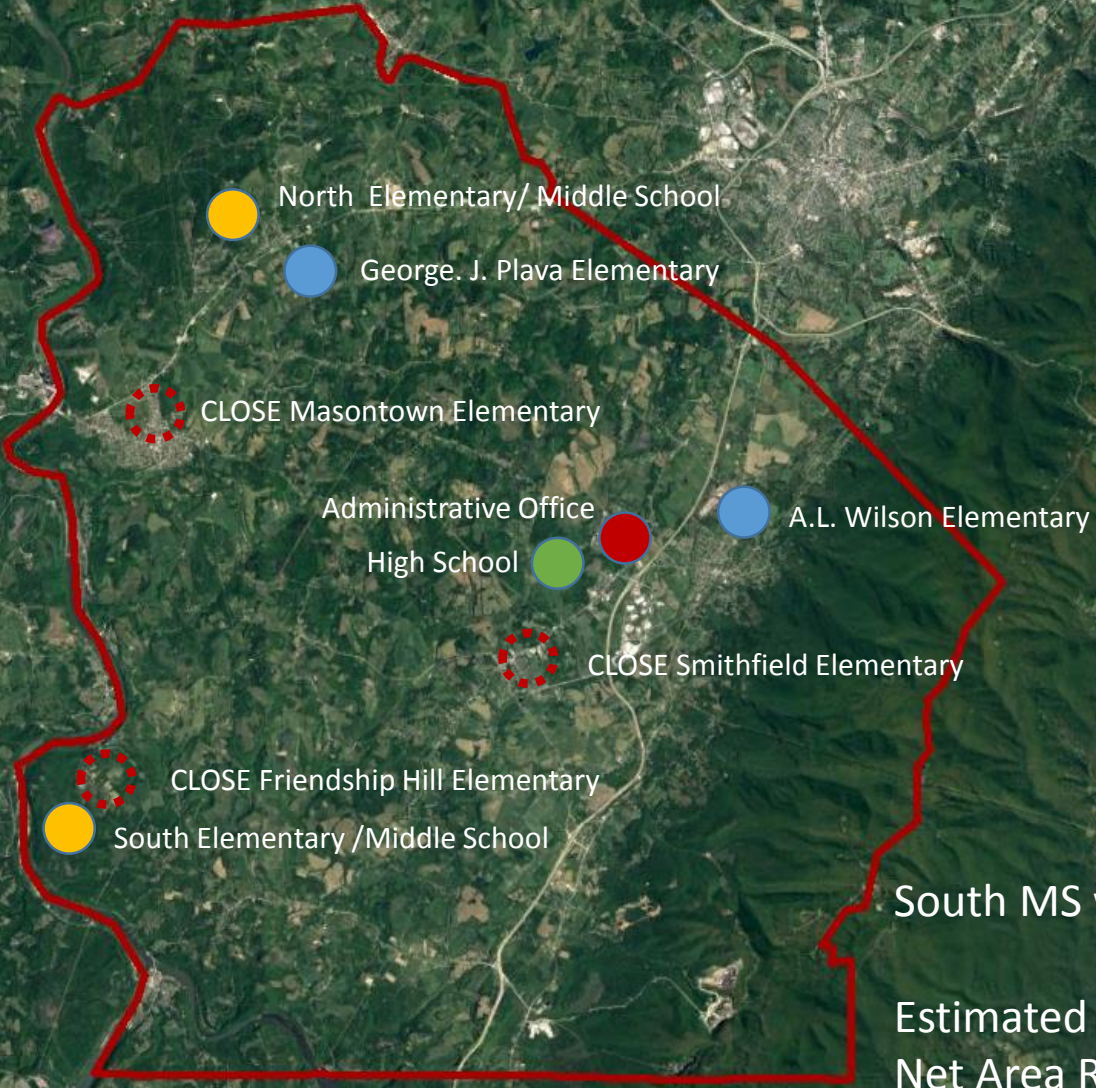
Friendship Students go to South

Smithfield or Masontown Students go to:

- Wilson
- North MS
- South MS
- Plava

Estimated Cost:	\$0
Gross Area Reduction	62,086 sf

Option 3 - Close Friendship, Masontown and Smithfield, Convert North & South to K-8



Student Disposition:

Friendship Students go to South

Smithfield Students go to:

- Wilson
- North MS
- South MS
- Plava

Masontown Students Go to North MS

South MS will require a 12,700 sf addition

Estimated Cost:	\$3,000,000
Net Area Reduction	90,259 sf

Option 4 - Close Plava, Friendship, Masontown and Smithfield, Convert North & South to K-5, Construct New MS

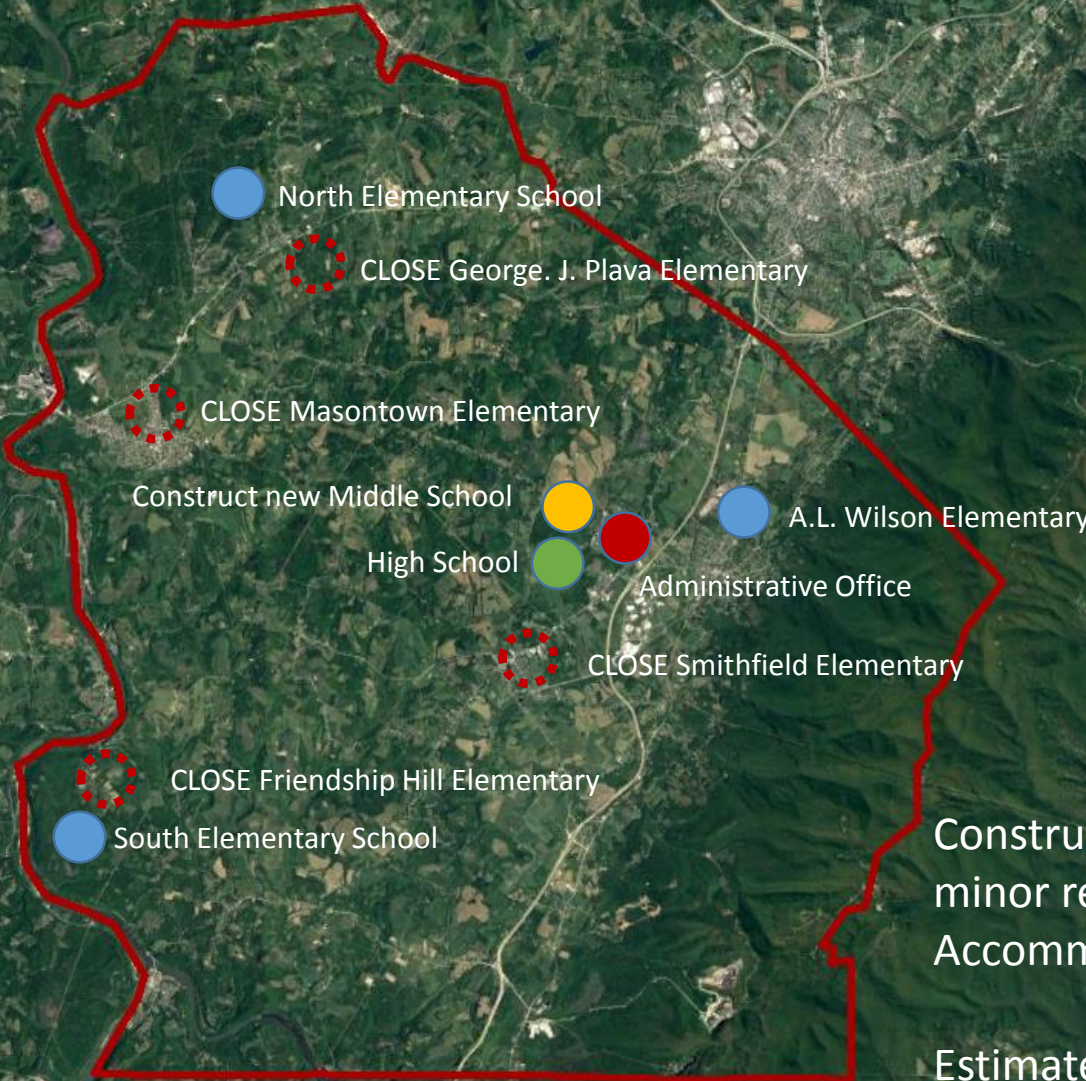
Student Disposition:

Friendship and Smithfield
Students go to South

Masontown and Plava
Students go to North

Middle Schools

- New 800 Student Middle School



Construction of new middle school and minor renovations to North and South to Accommodate Elementary Students

Estimated Cost:	\$35,700,000
Net Area Reduction	5,600sf

Option 4A - Close Plava, Friendship, Masontown and Smithfield, Convert North & South to K-5, Renovations and additions to Ferd Swaney for Middle School

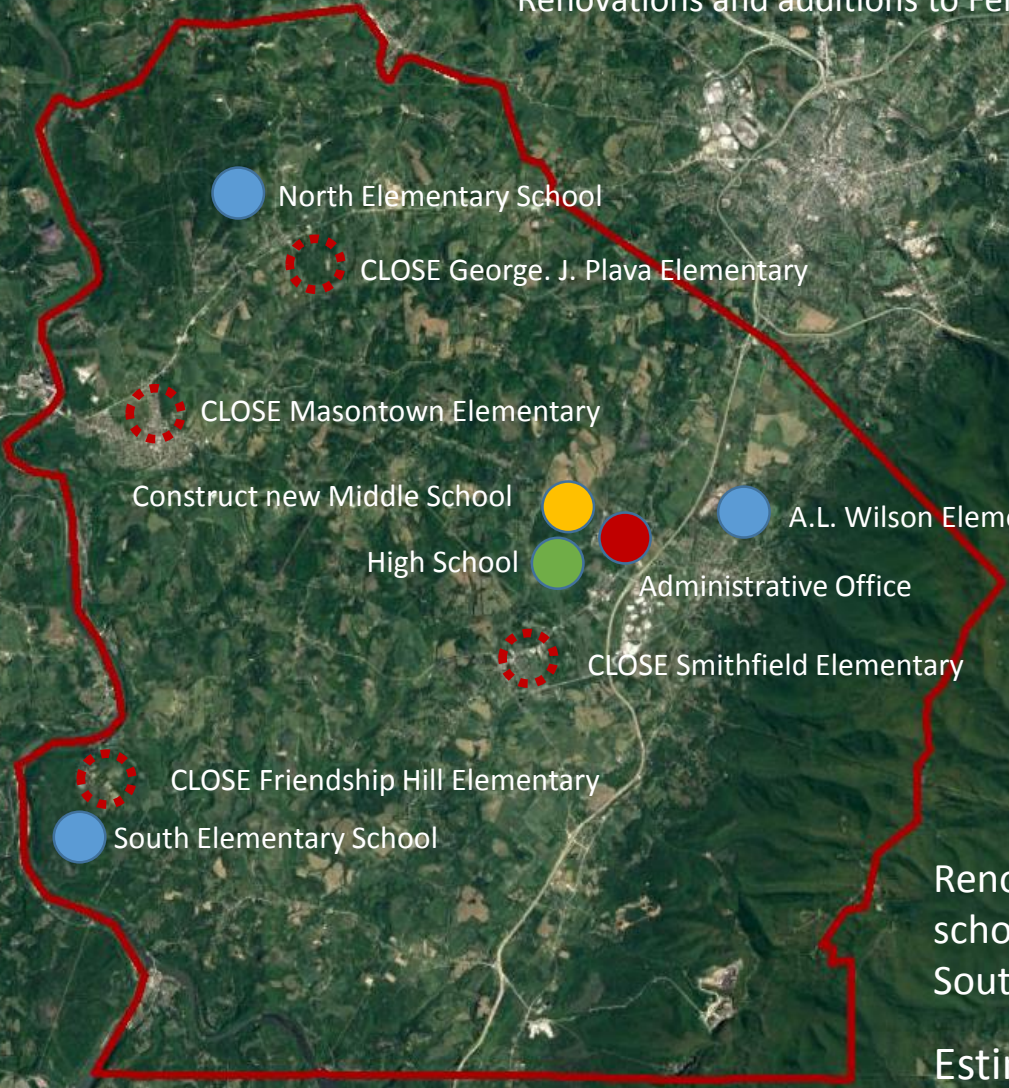
Student Disposition:

Friendship and Smithfield Students go to South

Masontown and Plava Students go to North

Middle Schools

- Renovations & Additions to Ferd Swaney



Renovate and add to Ferd Swaney for middle school and minor renovations to North and South to Accommodate Elementary Students

Estimated Cost:	\$31,528,000
Net Area Reduction	5,600 sf

Discussion

